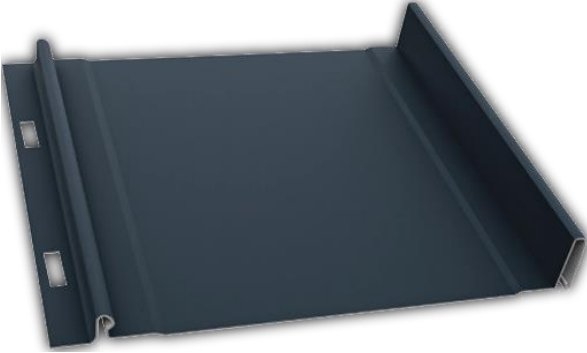


CRV
METAL SOLUTIONS

Product Catalog 2023

Metal Panels

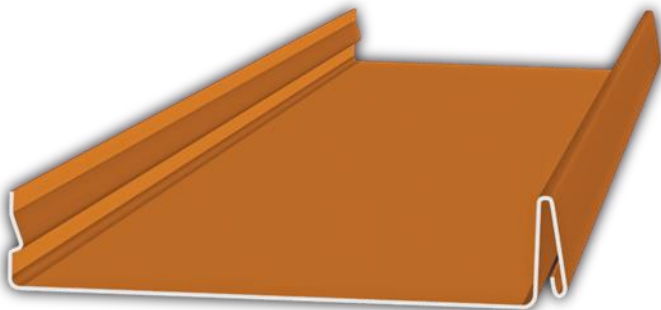
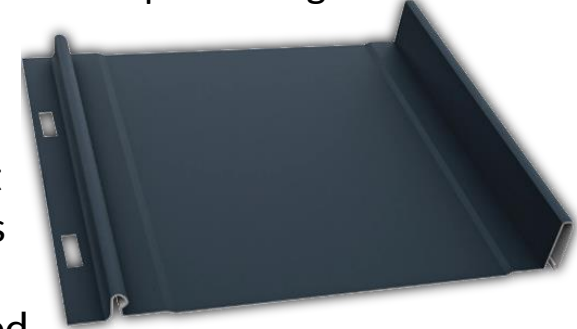
1.5" Nail-strip Standing Seam



Nail Strip Standing Seam provides easy installation, very high wind loads and waterproofing, in a wide array of colors and material types, delivering a unique option for homeowners.

This hidden fastener panel is manufactured in a 1" & 1.5" seam height and it is most readily available in widths of 15.8" & 14.8". The width is dependent upon the height of the seam that is spec'd for the job; however, this panel can be made into many different widths if required.

1" Nail-strip Standing Seam



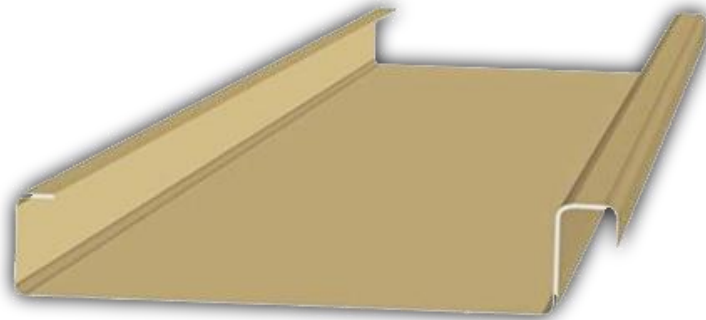
1.5" Snap lock 450

The Snap Lock panel has been an industry standard for many years and for good reason. This panel provides a lifetime of protection against all of mother natures elements. This true standing seam panel is manufactured in a 1" & 1.5" seam height. It is most manufactured in widths of 16.9" & 15.4". The width is dependent upon the height of the seam that is spec'd for the job; however, this panel can be made into many different widths if required.



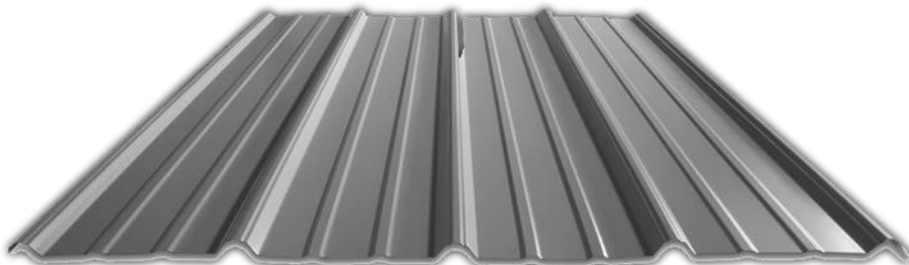
5v Metal Panel

The durable 5V Crimp metal panel offers a traditional and sleek look that has become popular with customers across a variety of industries. These panels are durable and long-lasting making them an excellent option for residential and agricultural buildings.



Mechanical Standing Seam

Mechanical Standing Seam lock is a very dynamic panel system. This panel can be formed into a radius or convex curvature and provides the highest level of protection against wind and moisture that Standing Seam can offer. This hidden fastener panel is manufactured in a 1.5" seam height. It is available in widths of 16" & 20". The width is dependent upon the height of the seam that is determined for the job; however, this panel can be made into many different widths if required.



(R-Panel) PBR Metal Panel

The PBR metal roof and wall panel is a high-quality, versatile option. They can be easily installed both horizontally and vertically, ensuring a functional design that meets the requirements of your customers' building projects. Known for their functionality in numerous markets, PBR metal panels are perfect for any residential and commercial application. Ideal for low slope applications, PBR offers high quality with ease of delivery and installation.

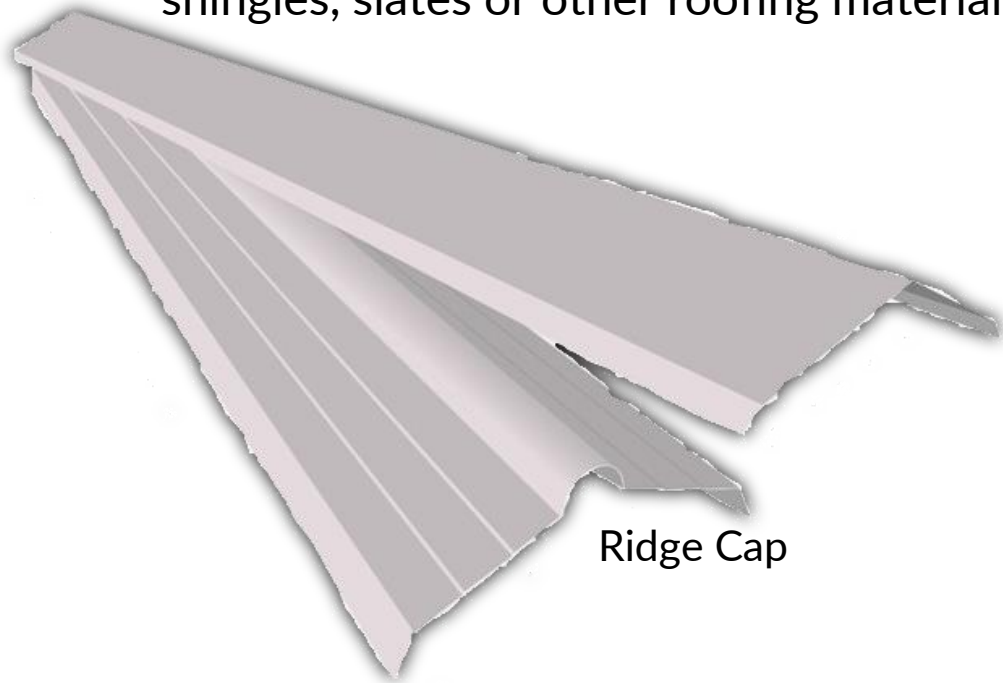
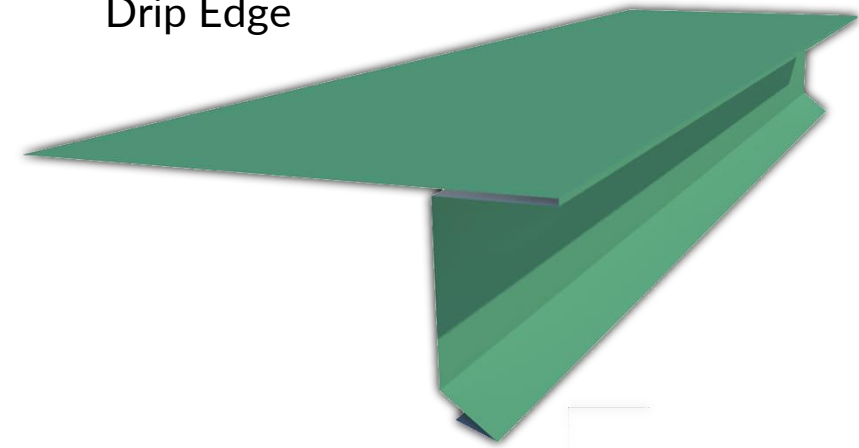
Roof Flashings

Roof drip edge flashing serves multiple functions on a building, the foremost of which is to assist water in leaving the roof edge with minimum damage to other building components by directing the water off the roof and into the gutter.

Without this detail water leaving the roof edge wants to run down building fascia's, soffits, and walls, sometimes even entering and damaging the structure.

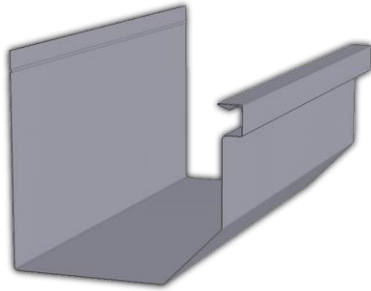
The drip edge also gives us a nice straight edge with which to align roof shingles, slates or other roofing material.

Drip Edge



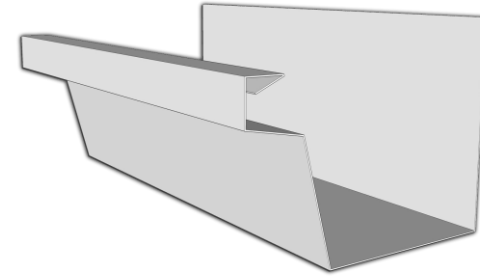
Ridge Cap

A ridge cap is an essential part of any roofing installation. Ridge capping is a type of roofing material that is used to cover the ridges of a pitched roof (where two roof sides meet). It is typically made of metal or asphalt and is used to protect the roof from water damage and to provide a finished look to the roof.

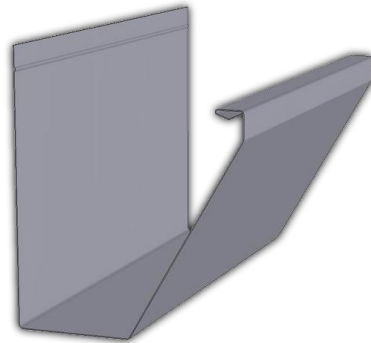


Commercial Gutter

Residential gutters are for your home and are installed at the edge of your roof, which is usually a gable, shed or hipped roof. Commercial gutters go commercial properties which tend to be larger and tend to have flatter roofs.



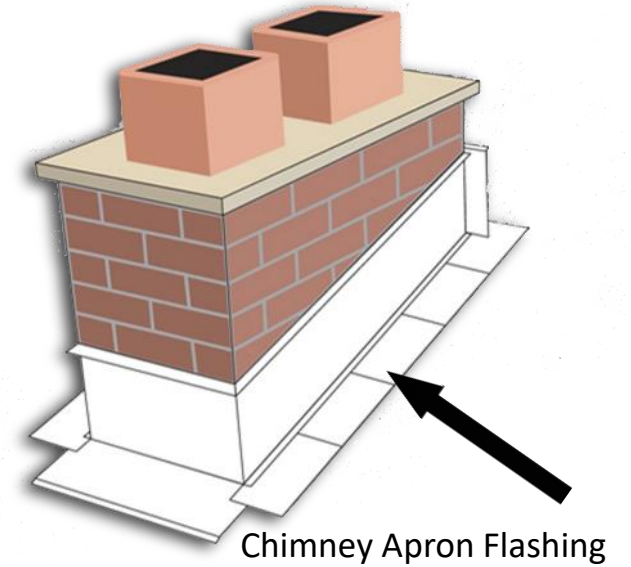
Residential Gutter



Fascia Gutter

Fascia are the long boards that run along the side of your gutters and the lower edge of your roof. They fix directly to the roof trusses and support the gutters and the bottom row of tiles on your roof.

Our Chimney Apron Flashings are designed to prevent water penetration into the building through the chimney stack. Lead Chimney Aprons are fitted during the construction of the chimney. CRV Metal Solutions Chimney Apron Flashings come in half and full sizes.



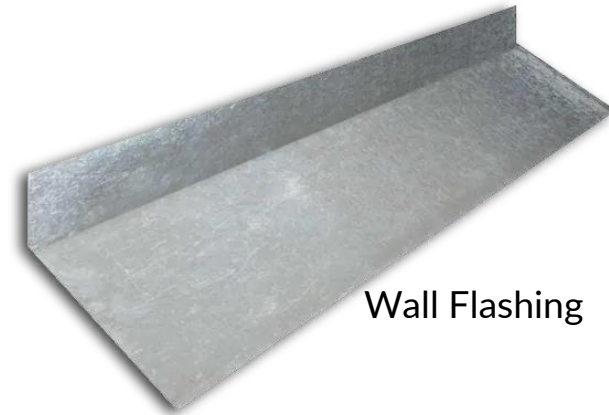
J-Channel flashing is designed specifically for trimming out openings on your wall panels. Windows, doors and louvers on the walls of your building blend in seamlessly when J-Channel is installed. J-Channel hides the cut lines of panels giving your project a clean finished look.



J Channel Flashing

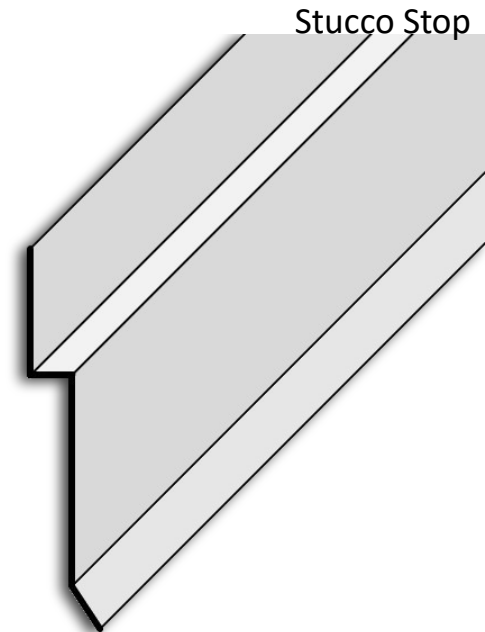


Wall Flashing is a thin material, usually galvanized steel, that professional roofers use to direct water away from critical areas of the roof, wherever the roof plane meets a vertical surface like a wall or a dormer. Flashing is installed to surround roof features, such as vents, chimneys and skylights.



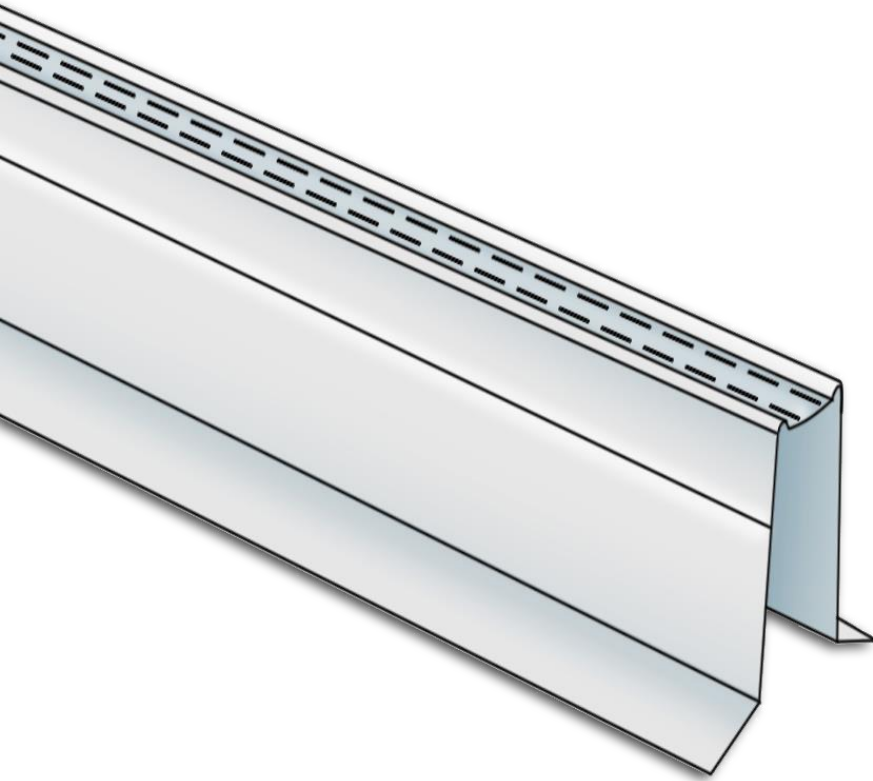
Wall Flashing

The Stucco Stop prevents entry of water at the shingles and the counter flashing creates a waterproof seal from water shedding off the masonry structure.



Stucco Stop

Metal Hip & Ridge Anchor



Metal Hip & Ridge Anchor is the only hip and ridge system with interlocking bond with foam adhesive giving it the highest uplift values of any system.

Fasteners



Metal to Wood Roofing Screws

The Metal to Wood also known as 'MTW' is a premium quality fastener that offers service life expectancy consistent with the top panel warranties in the business. The MTW is the combination of the corrosion resistance of a full 304 series stainless steel cap head and the strength of a carbon steel shank. #12 SCAMP 304 Stainless Steel cap head fasteners offer high holding and clamping power while resisting surface corrosion and discoloration

Now available in 1/4" drive head or 5/16" drive head variants available head painted in many popular metal roofing panel colors.

Panclips



#10-16 x 1" SS Panclip SDSS MTM 410
Stainless w/DMG85 SD3 SQ2
(250/bag) (5,000/Box)

CRV offers a full line of low-profile pancake head fasteners for metal deck, metal purlin and heavy steel substrates under the PANCLIP SD name. This is a collection of engineered fasteners for applications that require a low-profile head with thread and points designed to drill and tap into metal and steel substrates.

Popular installations include standing seam metal roofing, windows into steel frame, soffit and architectural cladding panel installation to steel framing.



#10-16 X 1" Panclip-SD MTM w/DMG85
SD2 SQ2 (250/Bag) (5,000/Box)



#10 x 1-1/8" Panclip XLP Econo MTW
w/DMG85 Blue SP TPA SQ2
(250/bag) (3,500/Box)

When the thinnest head that has a flange to secure materials is needed consider the Panclip XLP screw. These engineered extremely low profile fasteners are available for a variety of substrates including wood, metal and masonry block. The XLP headed fasteners are popular for installing nail strip metal roofing panels, standing seam panel clips, windows into wood buck, windows into masonry block, doors into masonry block, steel clips into steel and plywood into steel deck.



#14-13 X 3" and #14-13 X 5"
Panclip-SDL MTM/MTW w/DMG85 Black SD1 SQ2
(1000/Box,250/bag)

The PANCLIP SDL is a multi-purpose what some people would call an all-purpose screw. It is designed to install into substrates such as plywood, OSB, dimensional lumber, metal decking up to 16 ga, steel framing up to 16 ga or even poured concrete (with predrill). CRV offers a full line of PANCLIP SDL fasteners from 1-1/2" up to 10" lengths including a selection of stainless-steel sizes.

Rivets



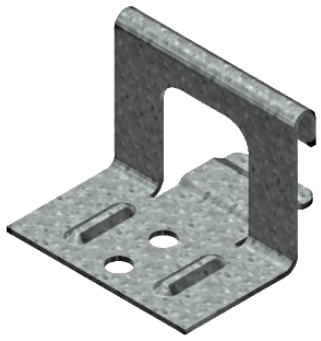
Blind rivets fasten joints without access to the reverse side of the sheet metal. CRV #43 painted stainless steel rivets are manufactured of corrosion resistant 302 / 304 stainless steel. CRV SS rivets exceed the corrosion resistant standards put forth in Florida Building Code section 1506.6.

CRV also offers unpainted #43 rivets in 304 stainless steel, 316 stainless steel and copper/brass.

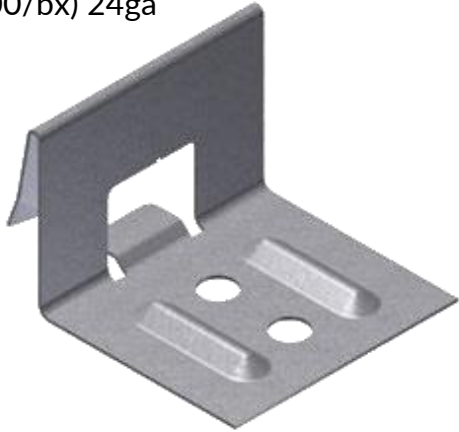
Colored rivets are available to complement popular metal roofing and sidewall panel colors. Standard in stock colors SS rivet for 250 piece per bag packaging:

Ash Gray 850, Black 507, Bright White 014, Burnished Slate 042, Caribbean Blue 012, Slate Gray/Charcoal 416, Cocoa Brown 110, Dark Bronze 324, Charcoal / Dark Gray 051, Evergreen 232, Forest Green 228, Gallery Blue 843, Light Stone 248, Medium Bronze 537, Metallic Champagne 1160, Metallic Copper 1116, Metallic/Nevada Silver 1161, Pre-weathered Galvalume Zactique 1162, Mill Finish, Old Town Gray 578, Patina Green 508, White 001, Red 890, Tan 020, Terra Cotta 928.

Standing Seam Snap Lock Clips



1-1/2" / 1-1/4" Snap lock New Tech 450
LD Utility Clips
Galvanized, Offset Tongue
1-1/4"T x 2"W 2 hole
(600/bx) 24ga



1-1/2" / 1-1/4" Snap lock New Tech 450
HD Panel Clips
Galvanized, Flat Tongue
1-1/4"T x 3"W 3-hole V
(500/bx) 24ga

Designed for secure fastening of snap lock style standing seam/concealed fastener metal roofing systems. Most styles available in G-90 galvanized or stainless steel. Panel clips can be manufactured to fit panels from most brands and styles of roll forming machines. Please specify make and model of machine when ordering. Most styles are designed with built in fastener relief to help eliminate panel dimpling. CRV offers snap lock clips to fit Quadro, Roll former, New tech, Knudson & Zimmerman machines. G90 and 304 Stainless Steel clips are designed to meet all 1506 and other building code requirements.

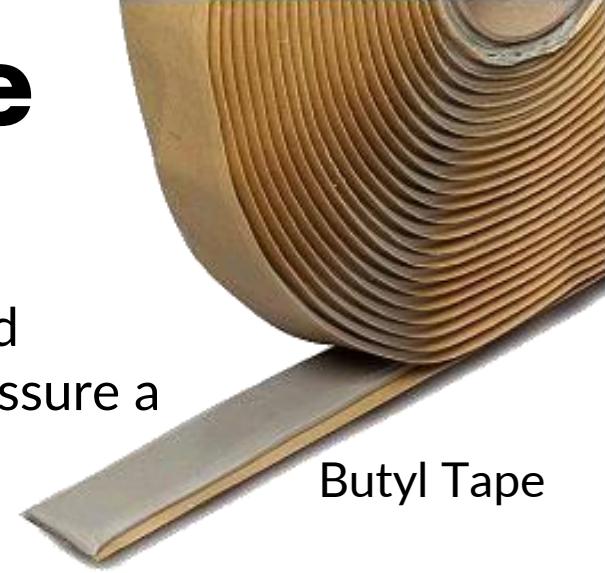
Panel Penetration Flashings

Pipe and penetration flashings to be used with standing seam metal roofing panels. CRV offers small flashings for wires or lightning rods all the way up to large flashings for furnace or chimney pipe penetrations.



Sealants and Butyl Tape

Butyl Tape is a high-grade sealing tape for metal roofing details. Butyl Tape is designed to seal and prevent the entry of dust, air and moisture and assure a weather tight seal in metal building details.



Butyl Tape



Boss PRO 125 Multi-Sealant



Geocel Silicone 2300 Tripolymer Sealant

CRV offers sealant from a few select manufacturers available in colors to complement metal roofing panels. Most colors are sold in full case quantities and may not be combined with other CRV products.